



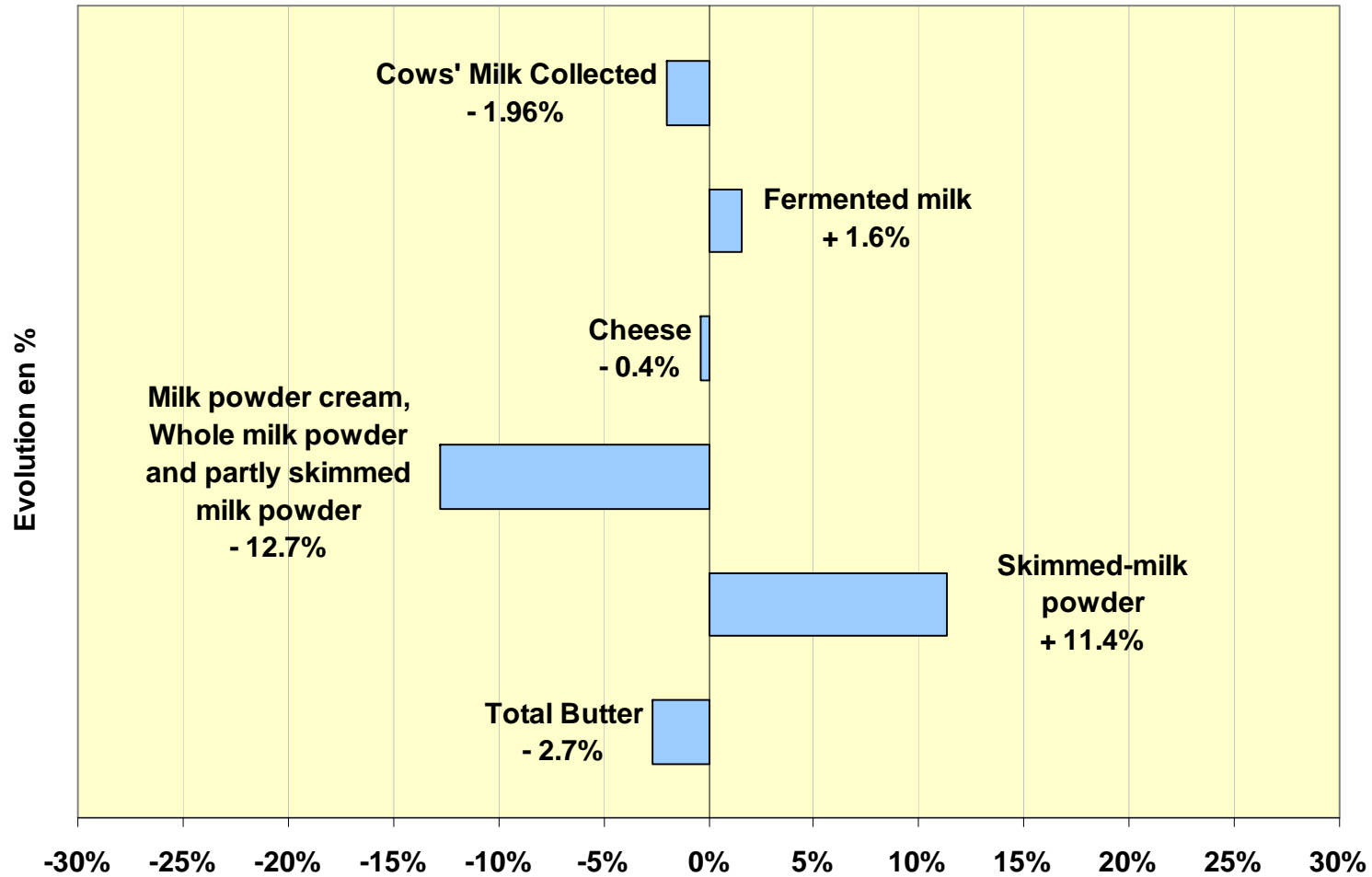
Commission européenne  
Agriculture et développement rural



# Milk Market Situation

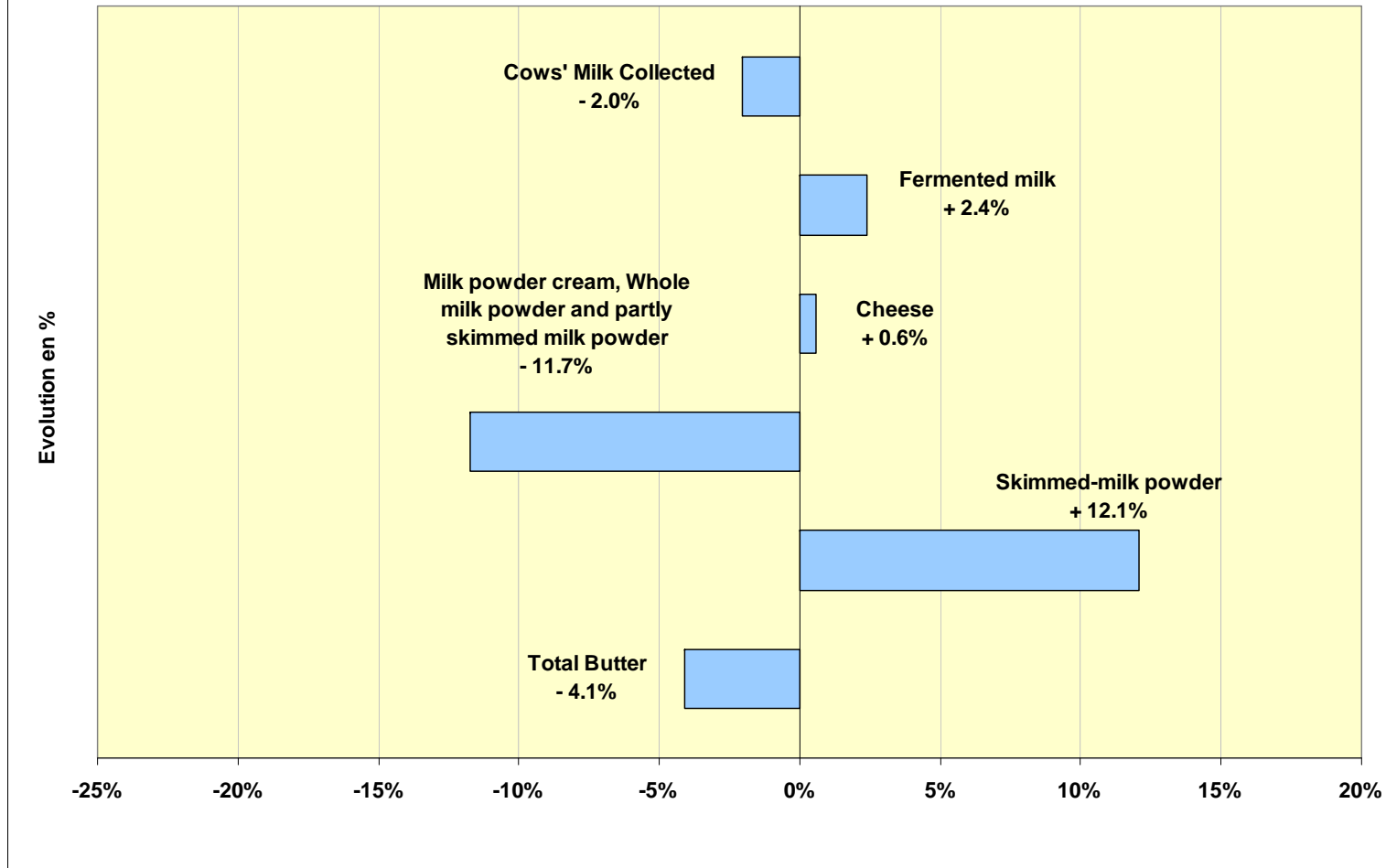
Brussels, 04 February 2010

## EU-27 Deliveries/Productions development (Jan-Oct 2009 compared to Jan-Oct 2008)



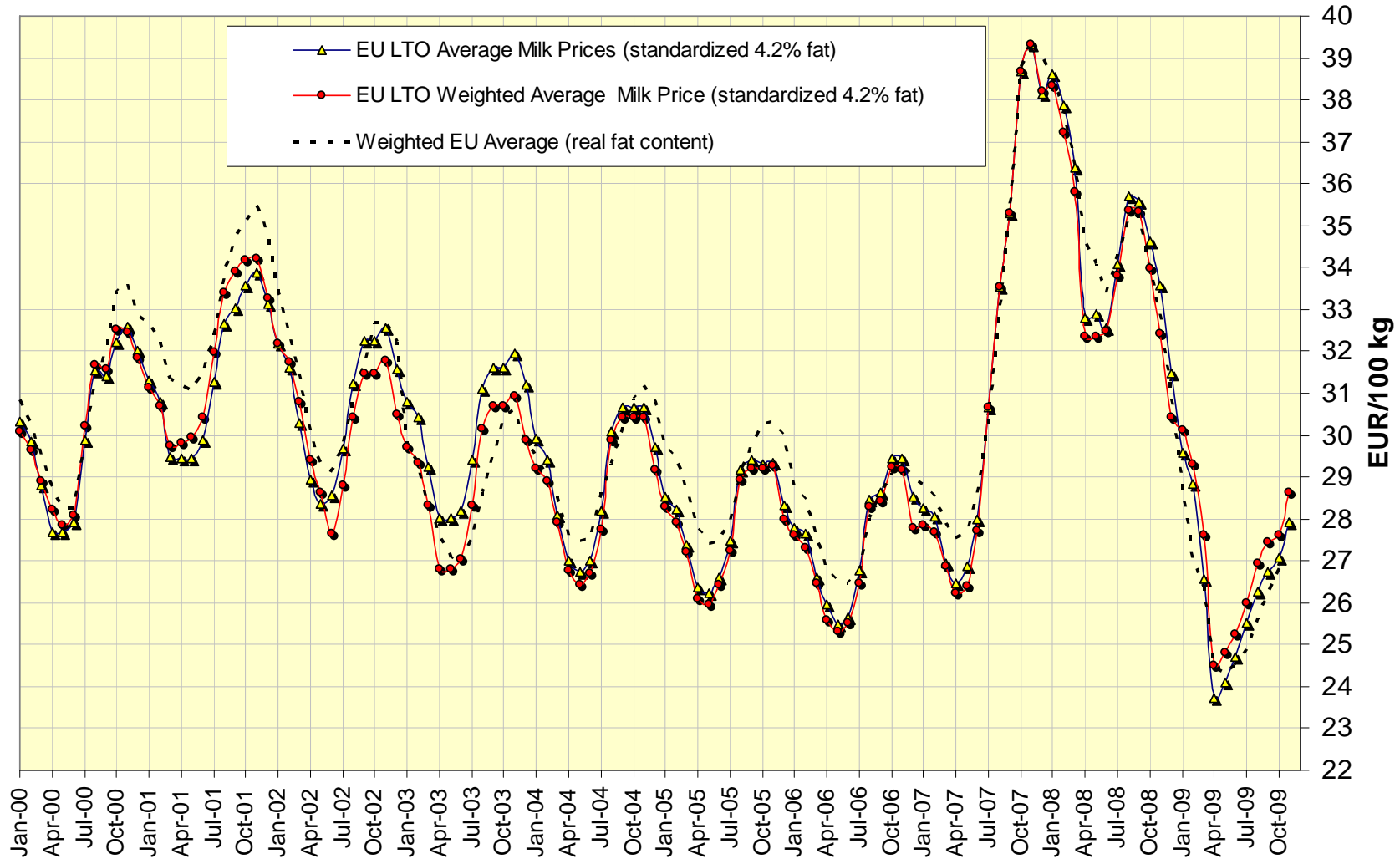
**!!! Data from some Member States are confidential and are NOT included in this table !!!**

**EU-27 Deliveries/Production developments  
(Apr-Oct 09 compared to Apr-Oct 08)**



**!!! Data from some Member States are confidential and are NOT included in this table !!!**

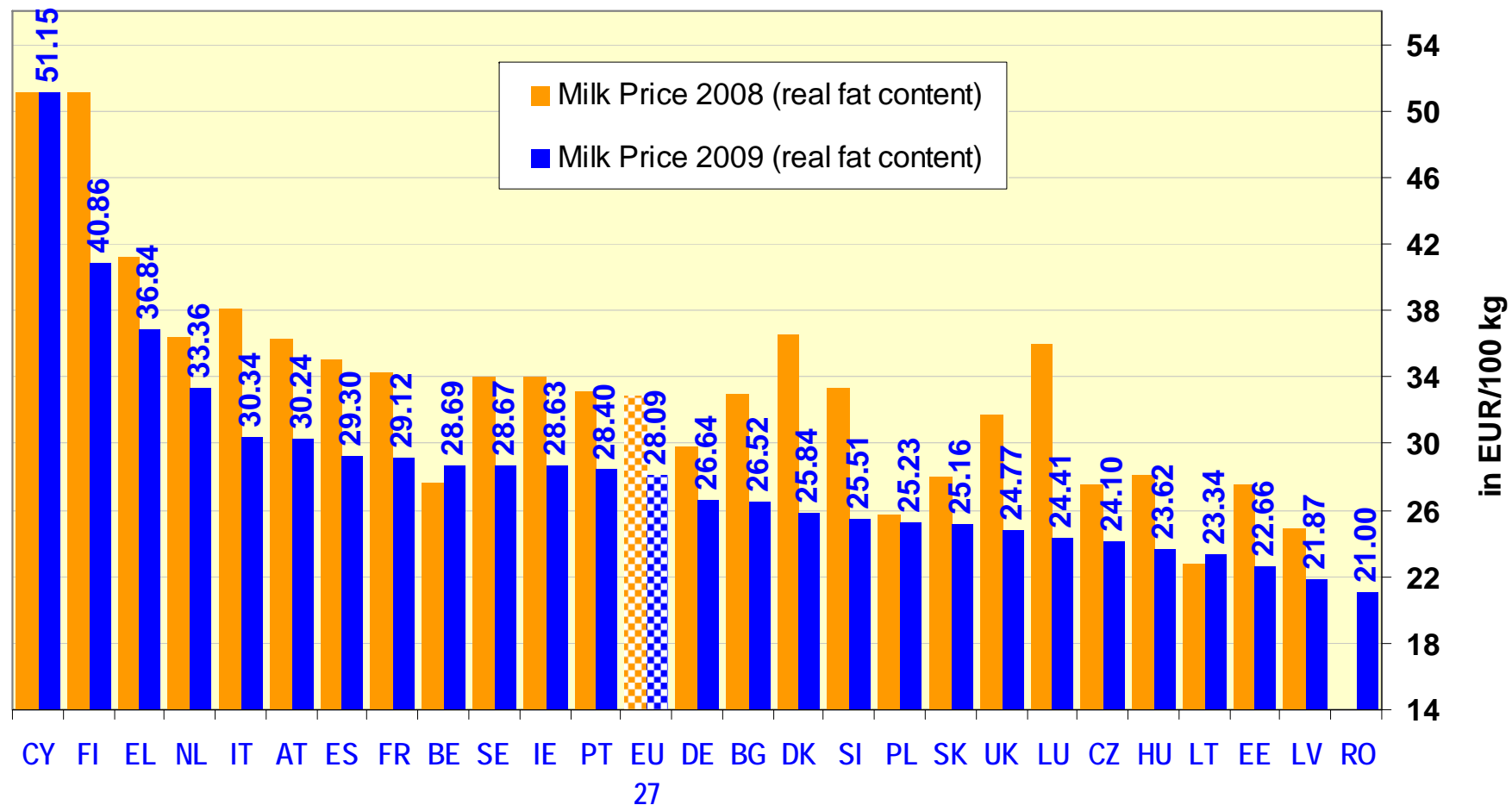
# Milk Prices Evolution (up to November 09)



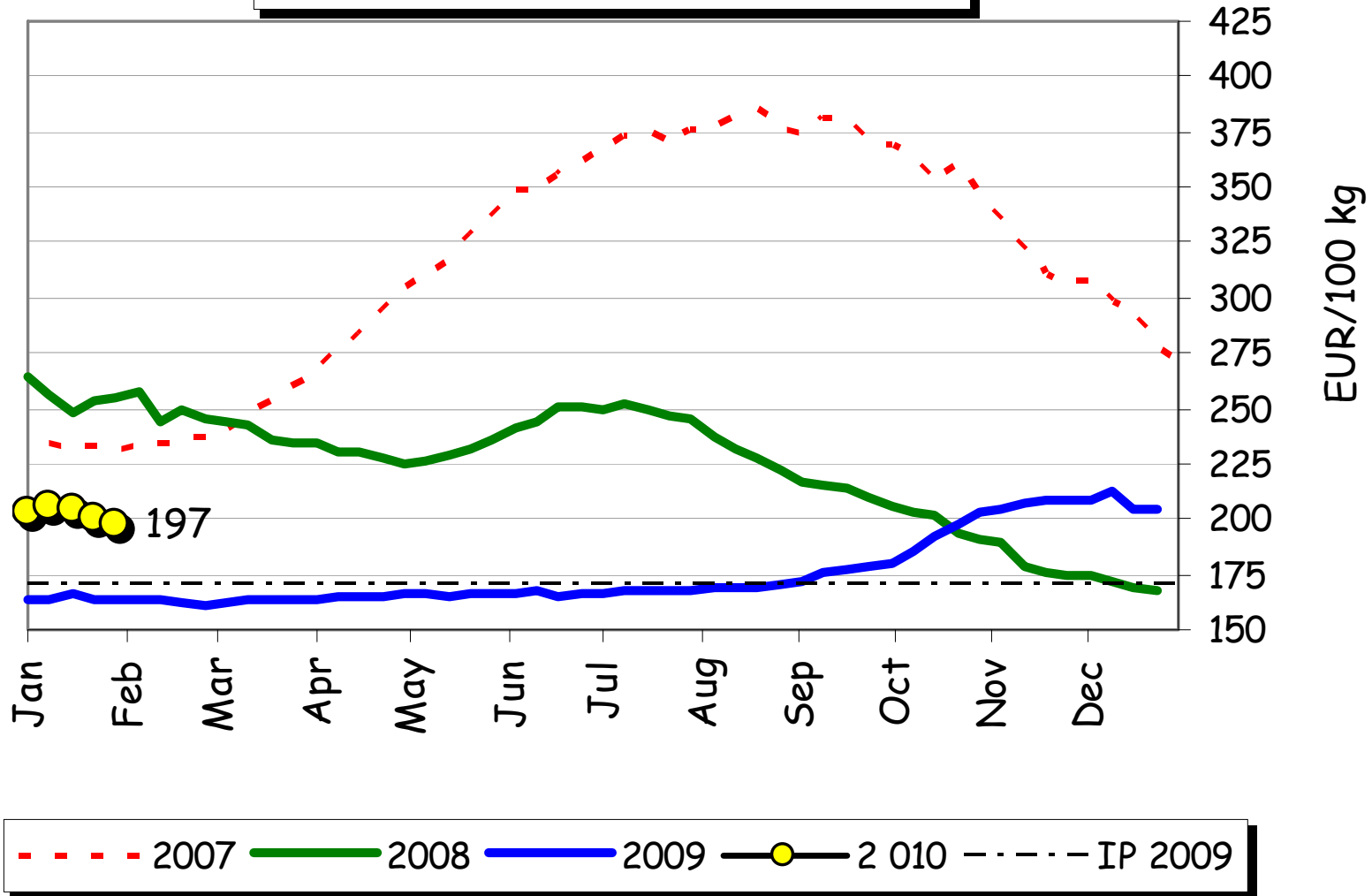
LTO : Land- en Tuinbouworganisatie Nederland (<http://www.milkprices.nl/>)

# EU Milk Prices

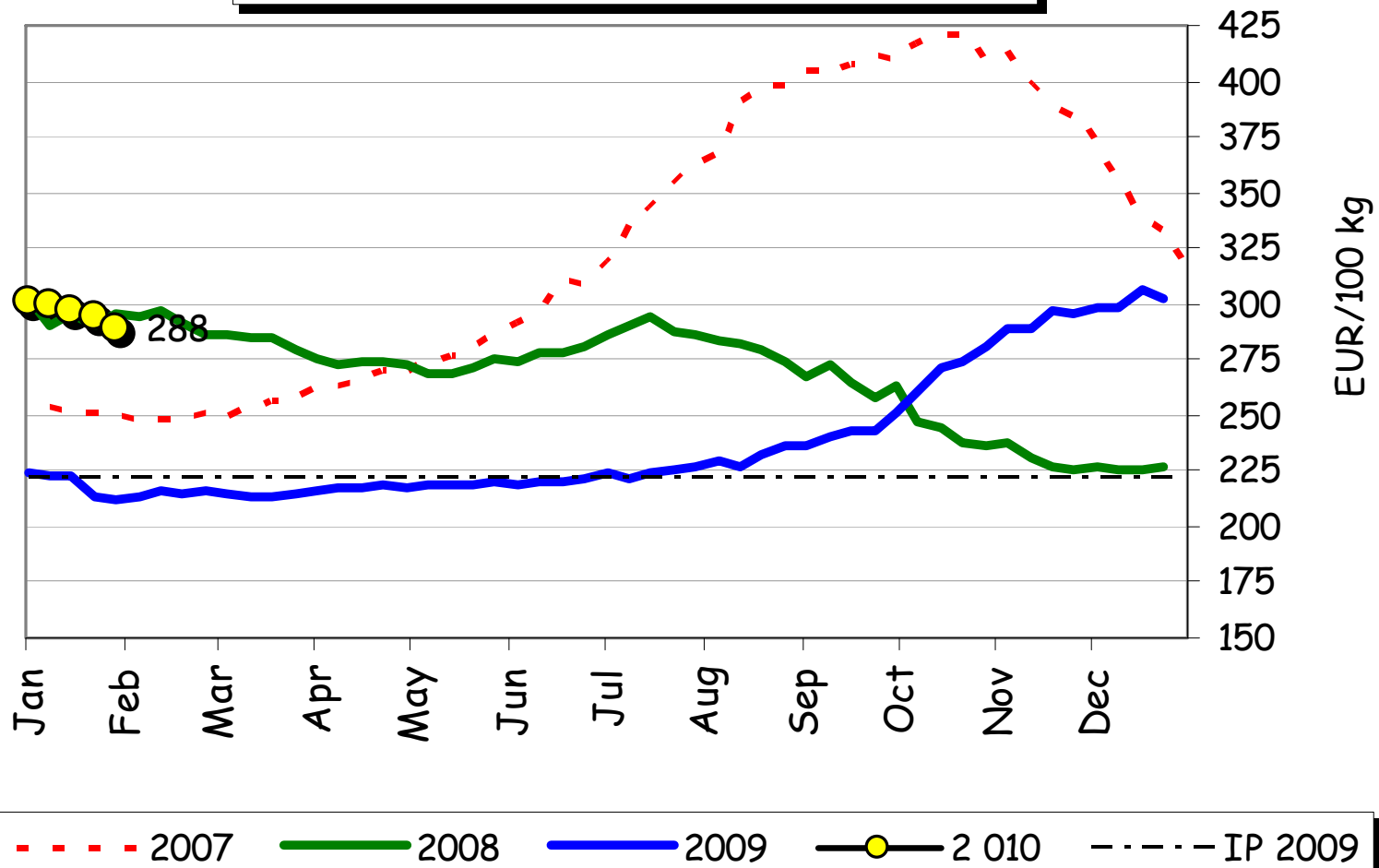
(November 09 compared to November 08)



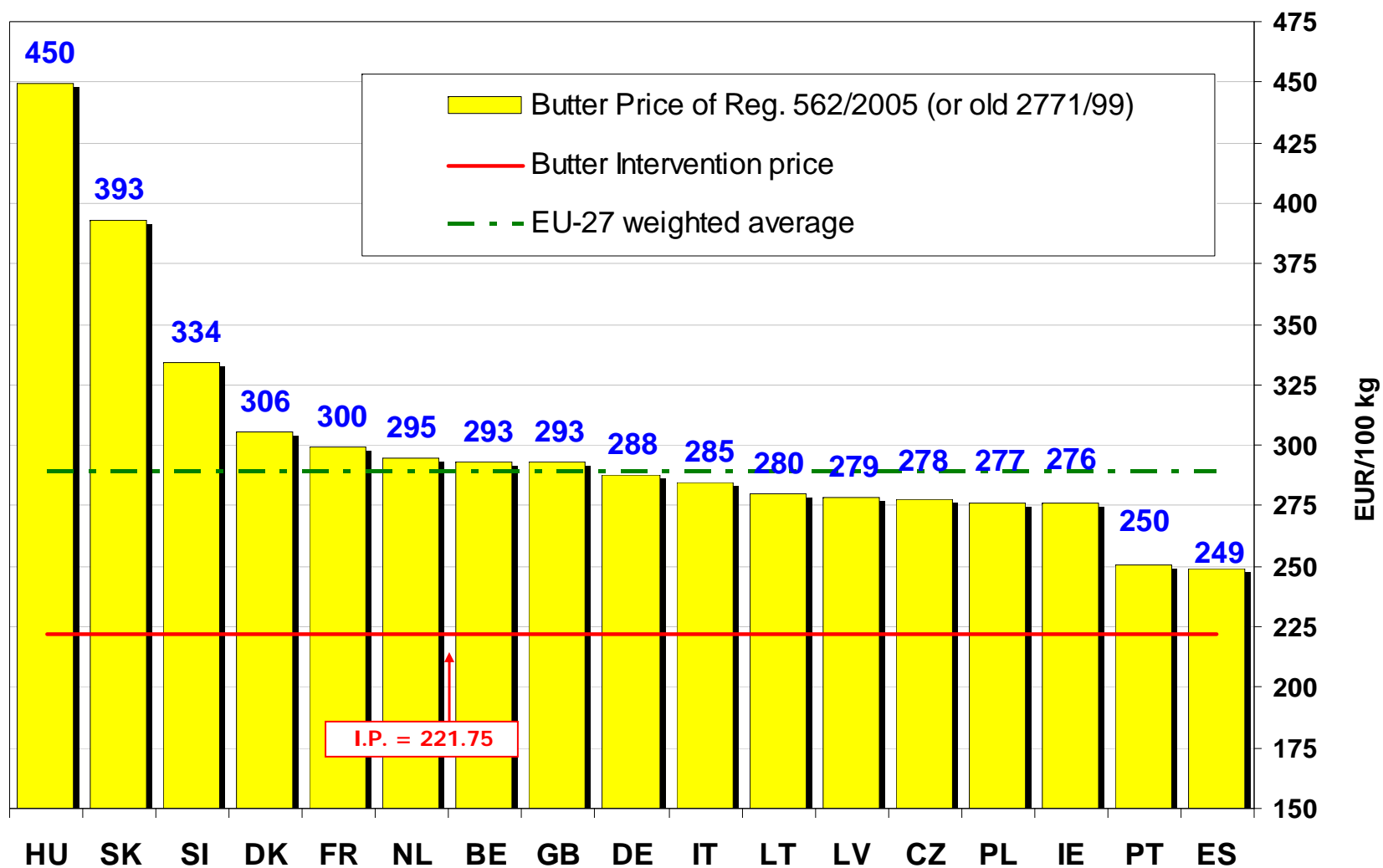
## Monthly EU15/25 SMP Prices

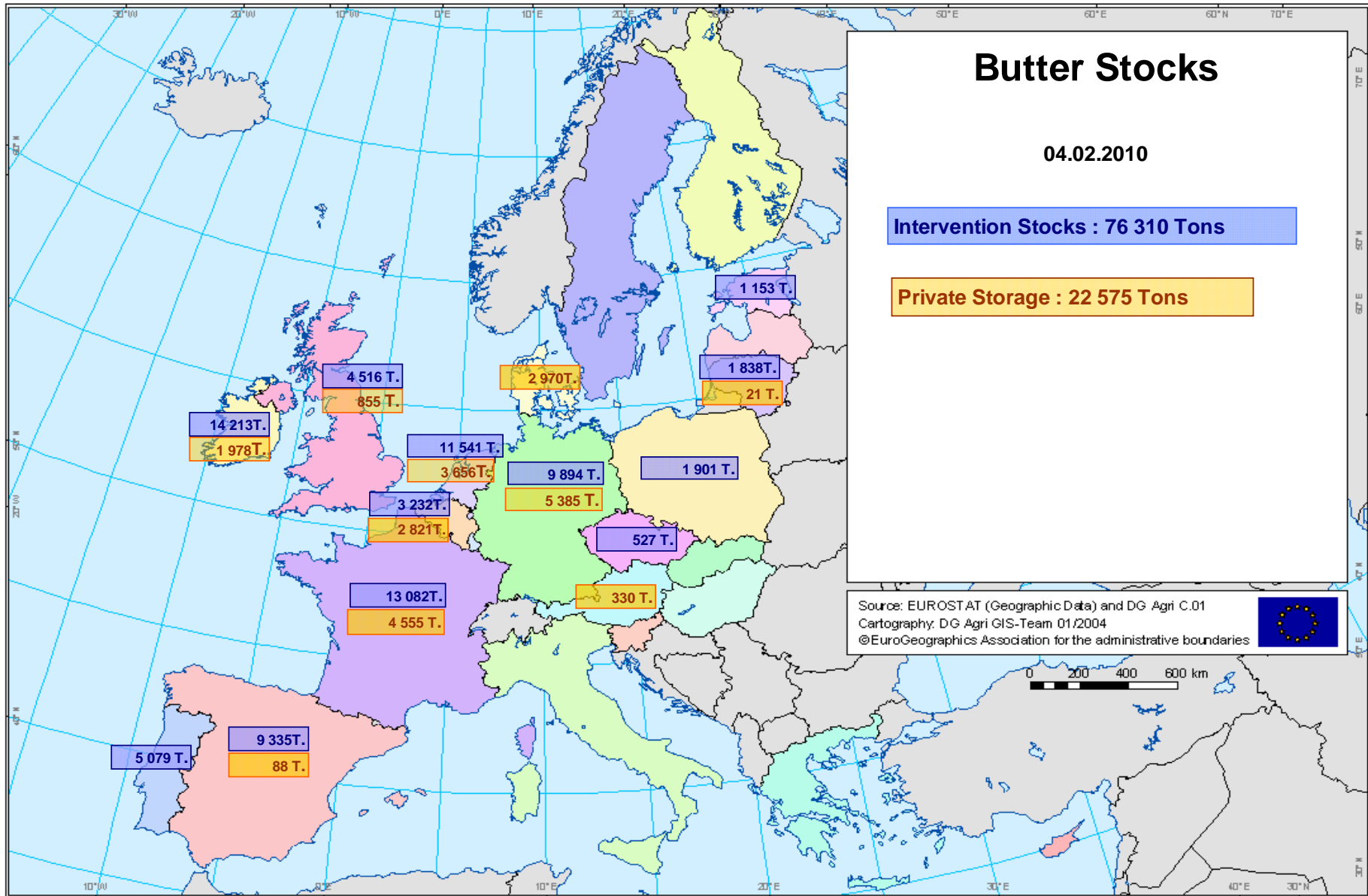


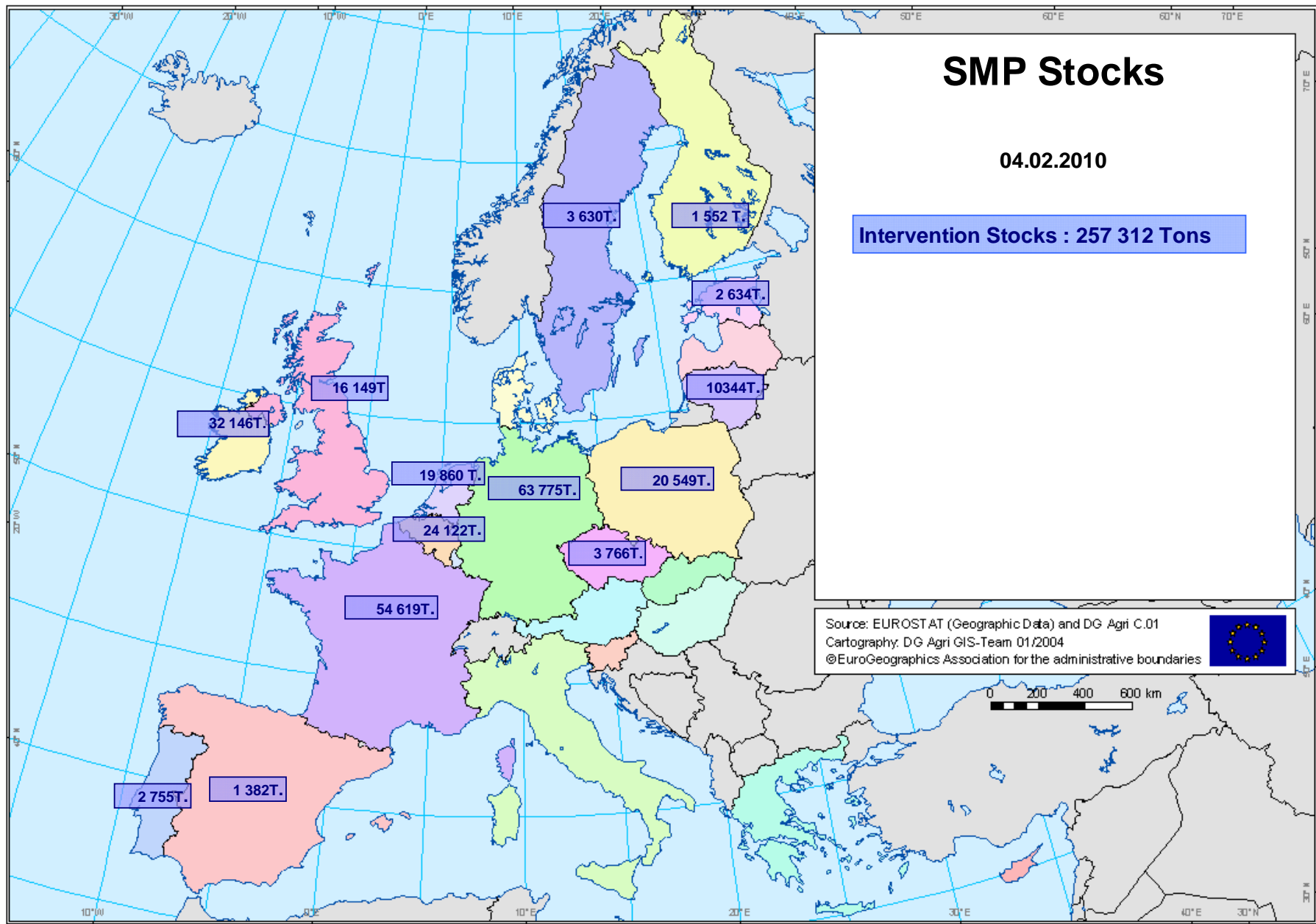
## Monthly EU15/25 BUTTER Prices



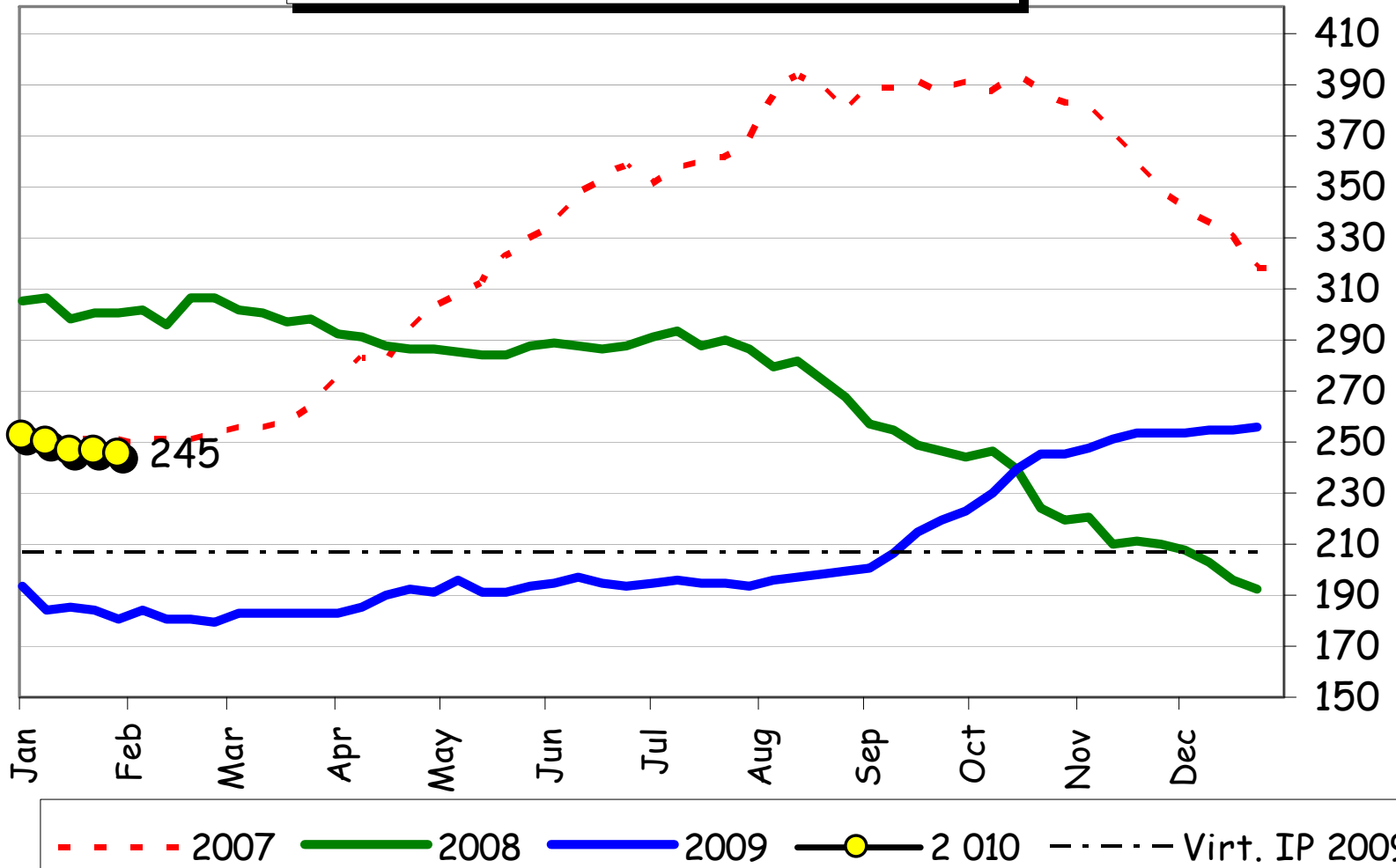
## EU Butter Prices (up to 31.01.2010)



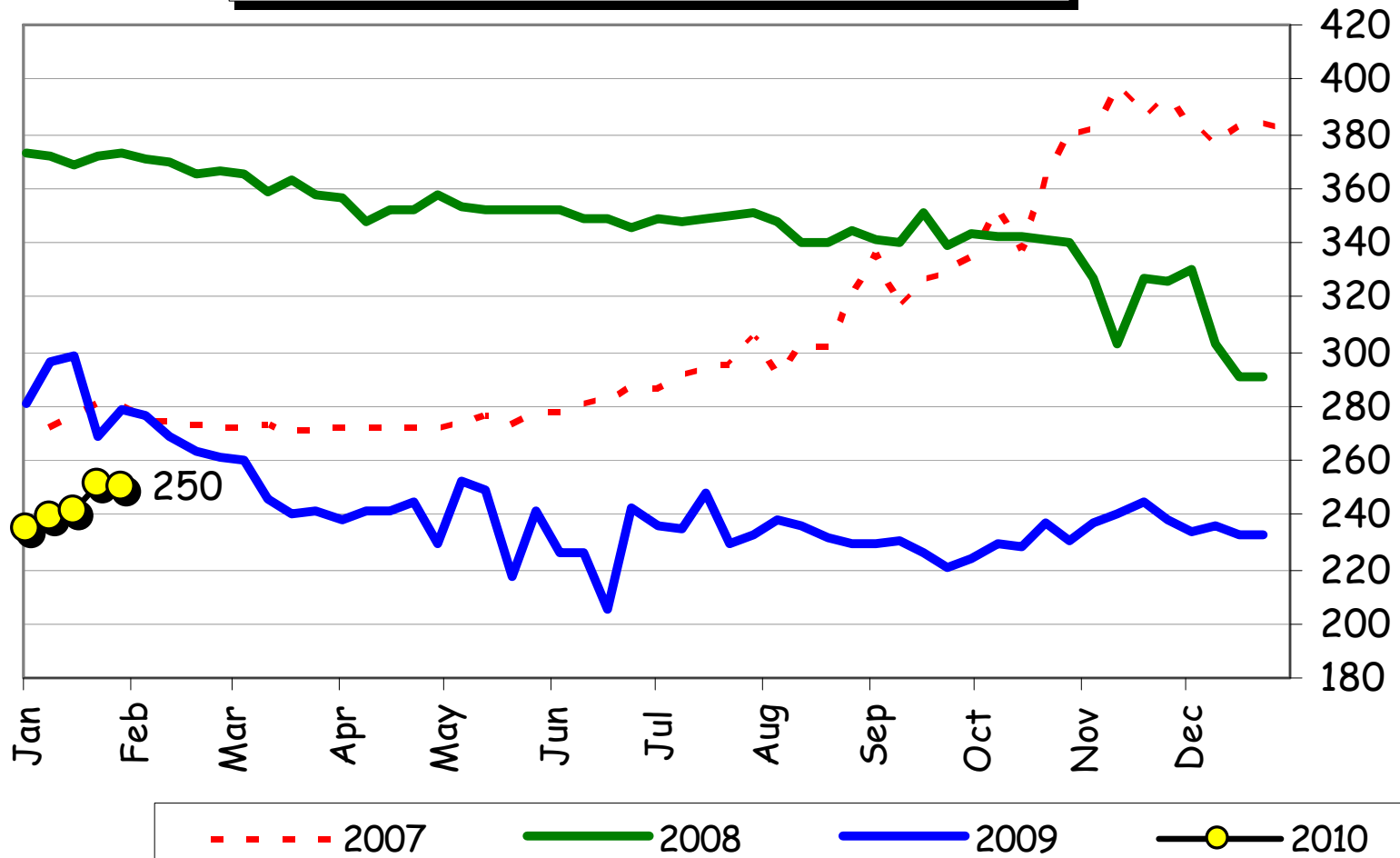




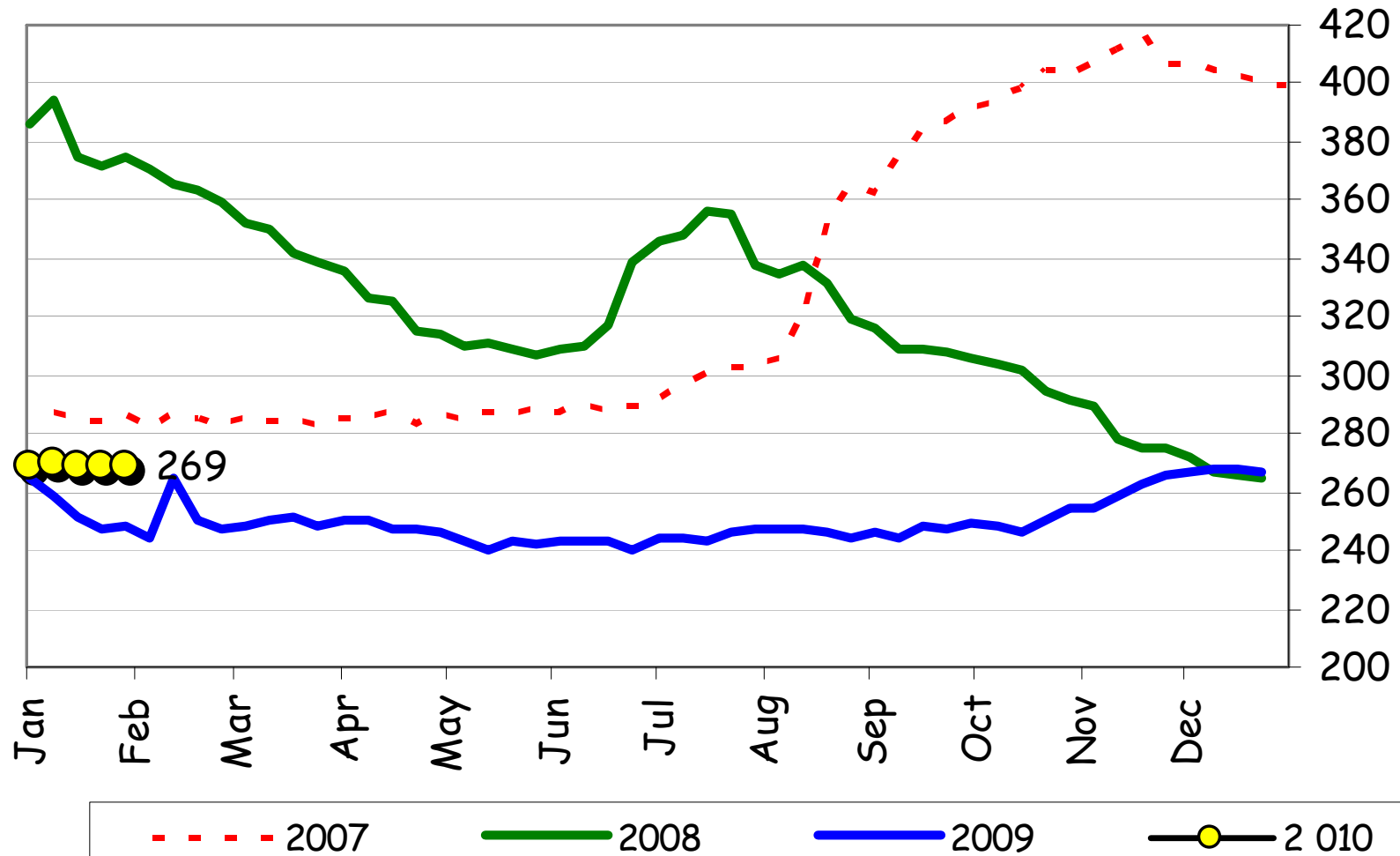
## Monthly EU15/25 WMP Prices



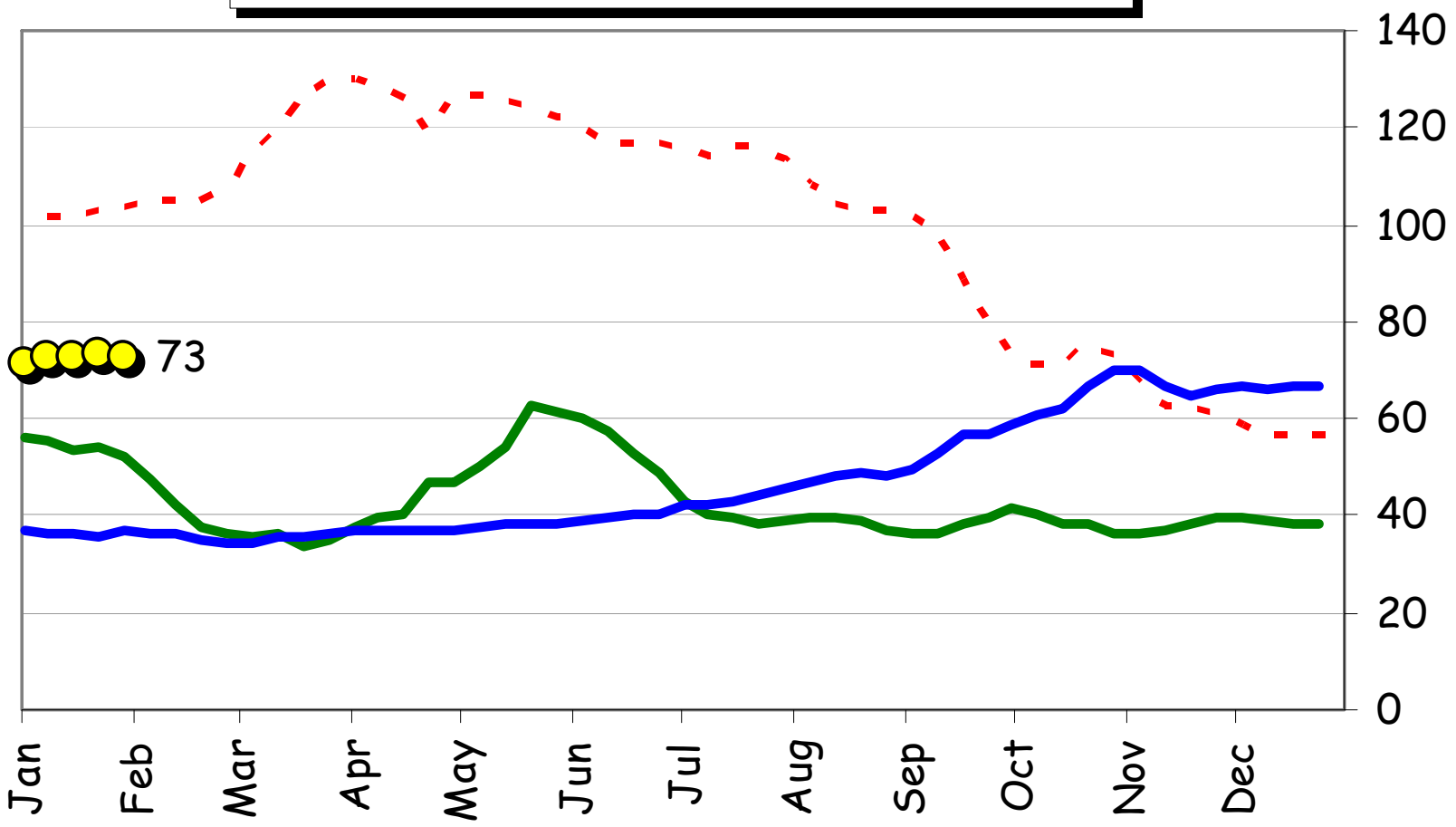
## Monthly EU15/25 CHEDDAR Prices



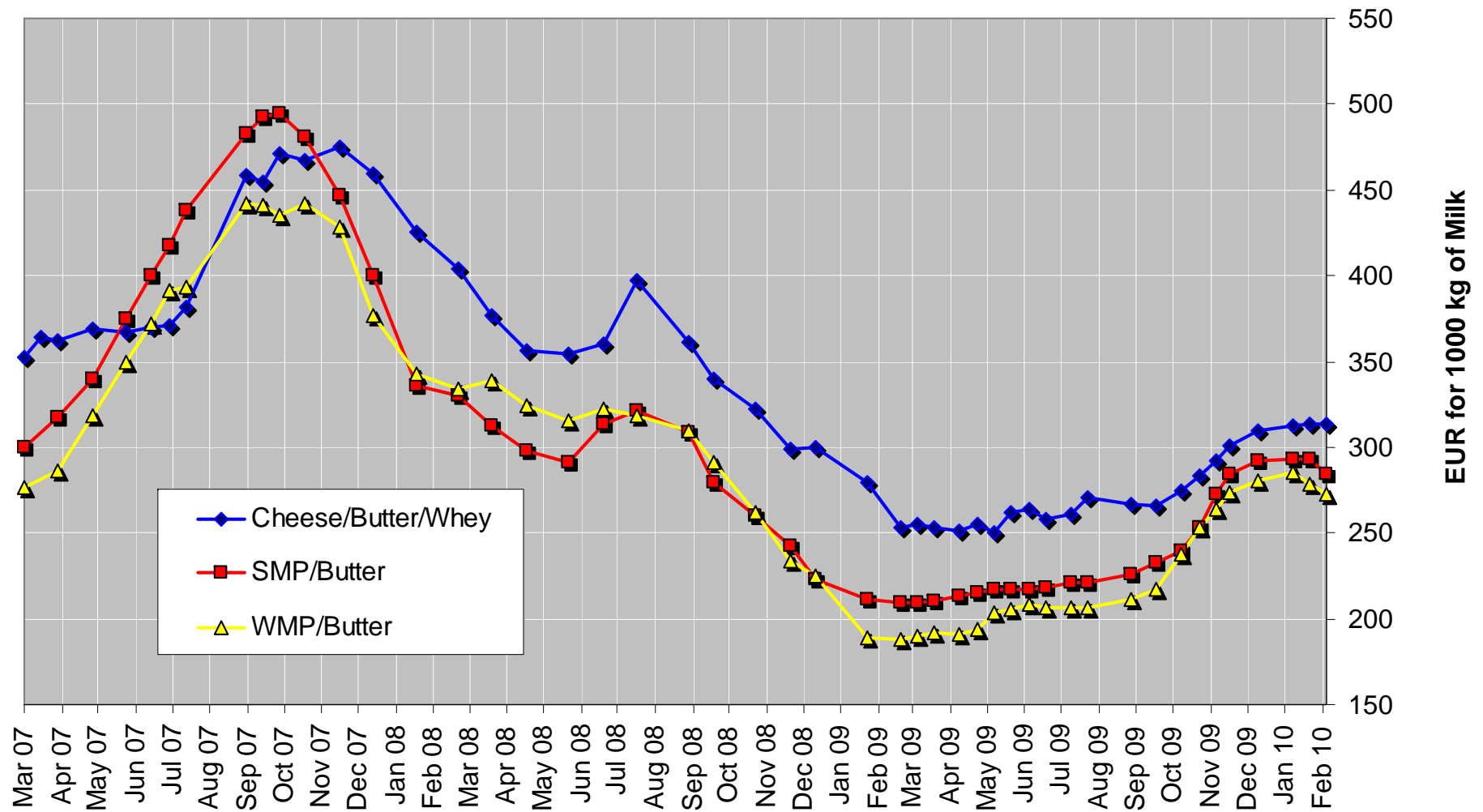
### Monthly EU15/25 EDAM Prices



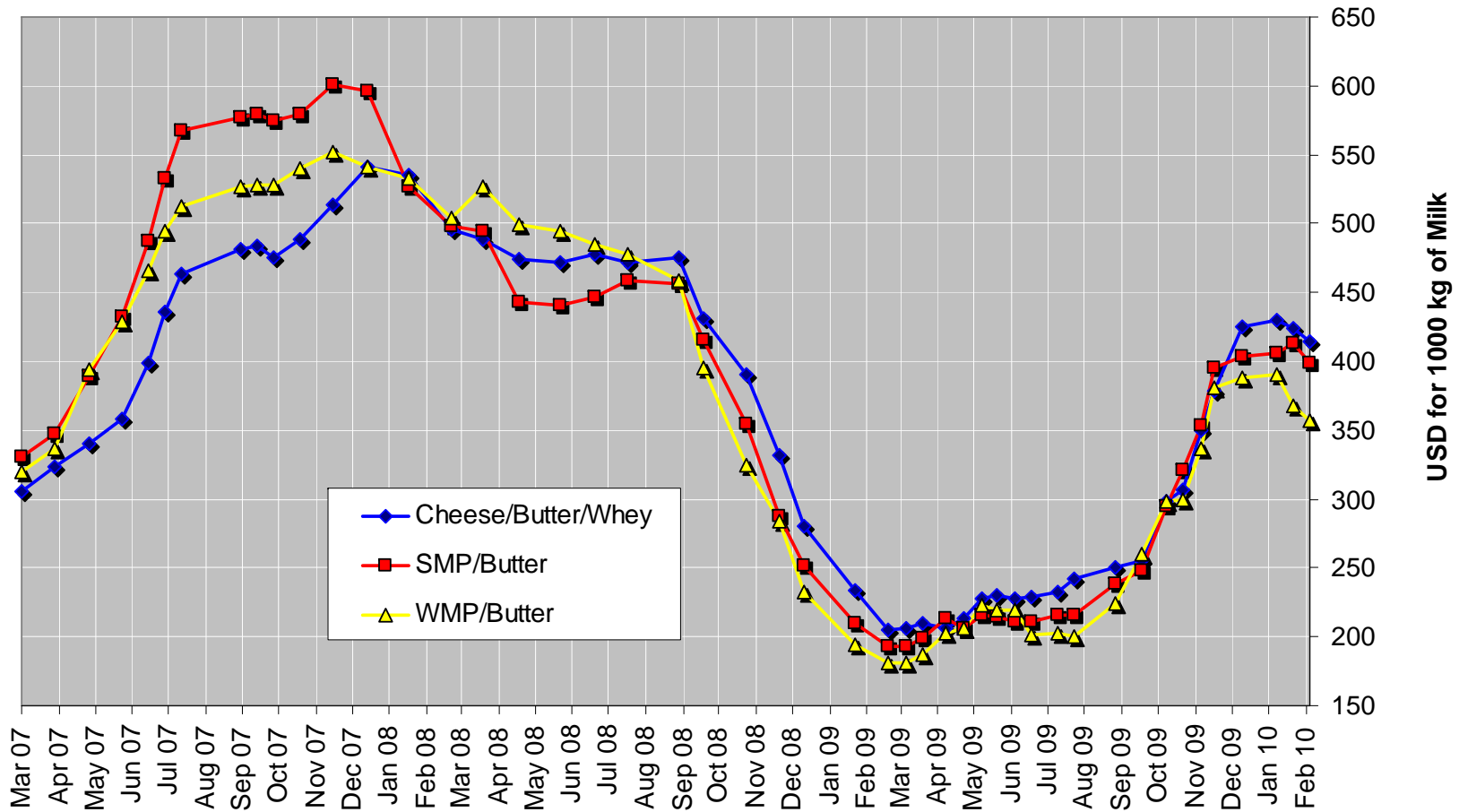
# Monthly EU15/25 WheyPowder Prices



## EU Income of manufacturing of Cheese/Wheypowder, SMP/Butter and WMP/Butter in EUR *(changed time series of cheese prices)*



## WORLD Income of manufacturing of Cheese/Wheypowder, SMP/Butter and WMP/Butter (in USD).



US dollar (USD)

# USD/EUR

Latest (3 February 2010): EUR 1 = USD 1.3984 +0.0047 (+0.3%)

Date range: [1m](#) | [3m](#) | [6m](#) | [1y](#) | [2y](#) | [5y](#) | [10y](#) | [All](#)

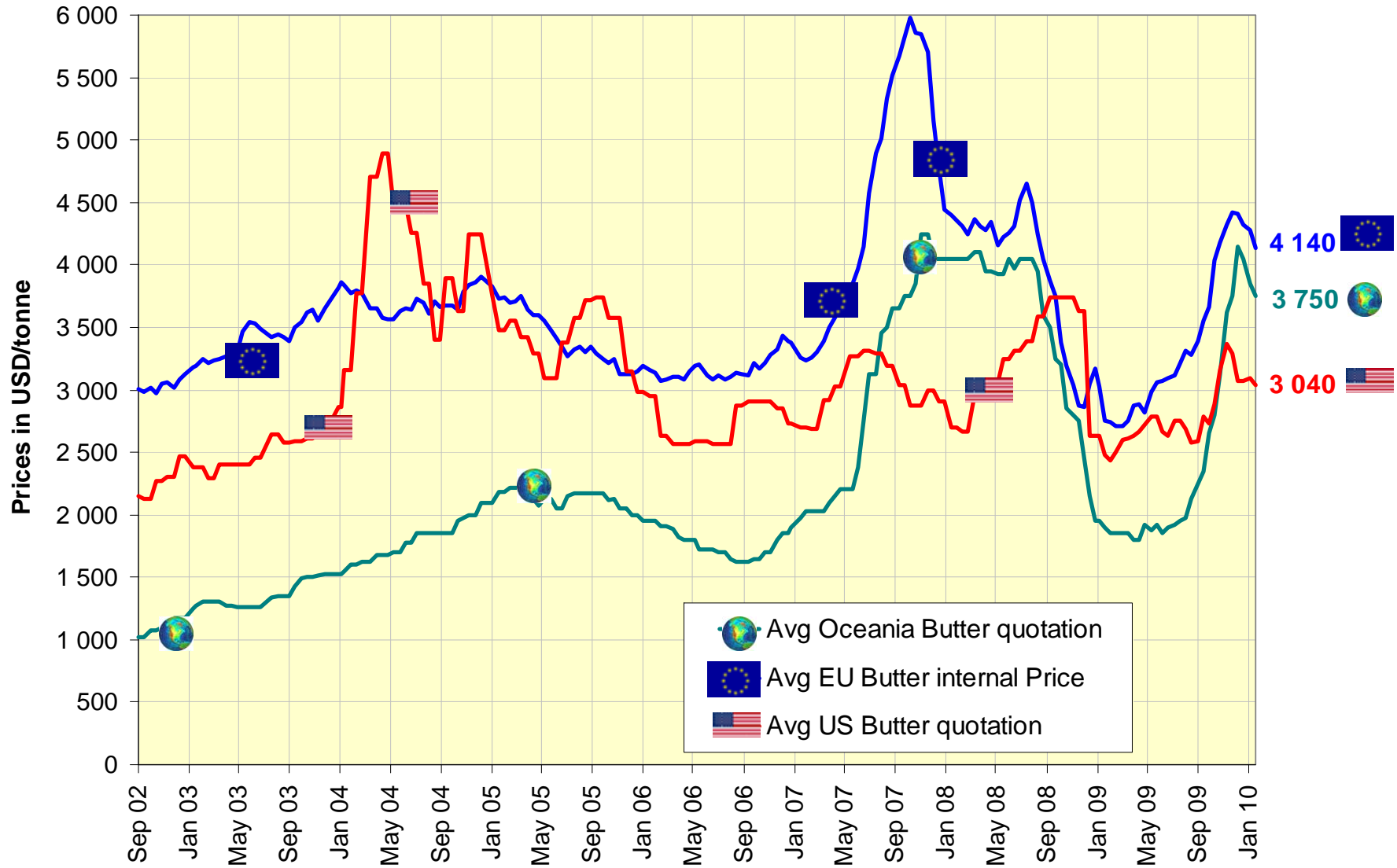
[See EUR vs. USD](#)

Change from 3 February 2009 to 3 February 2010 +0.1135 (+8.8%)

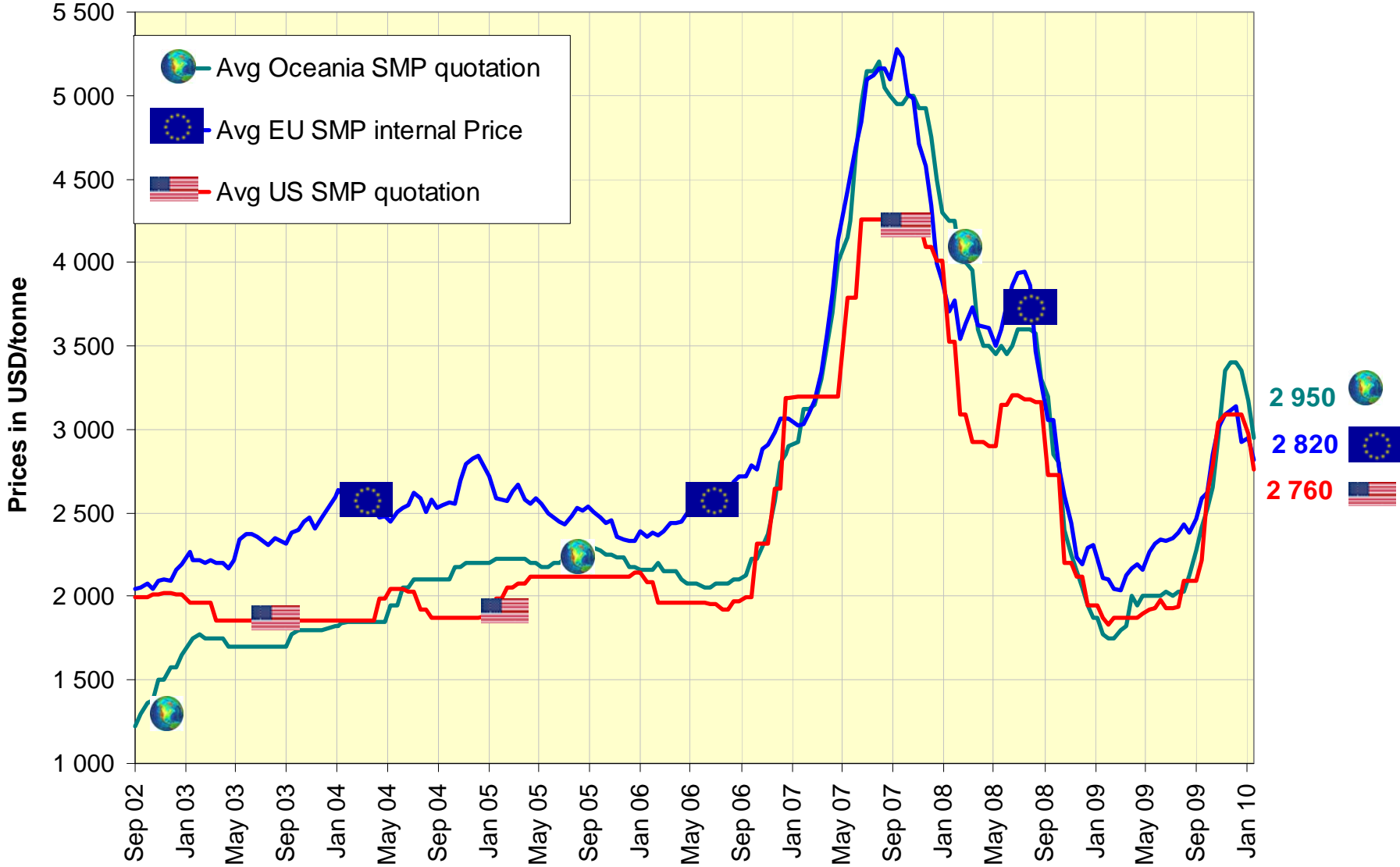
Minimum (5 March 2009): 1.2555 - Maximum (3 December 2009): 1.5120 - Average: 1.4036



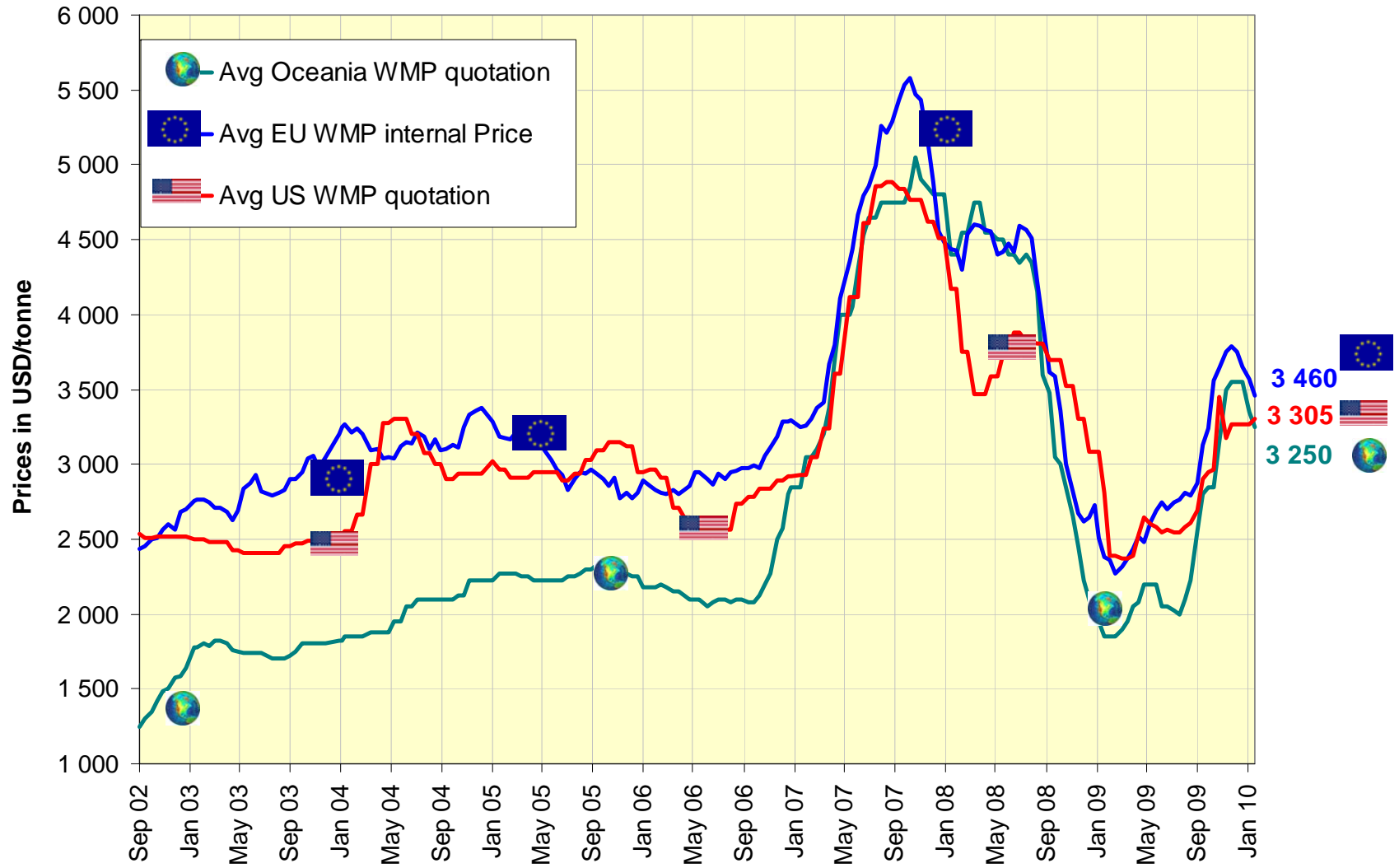
## EU/US/Oceania Quotations of Butter



# EU/US/Oceania Quotations of SMP



## EU/US/Oceania Quotations of WMP



# EU/US/Oceania Quotations of Cheddar

